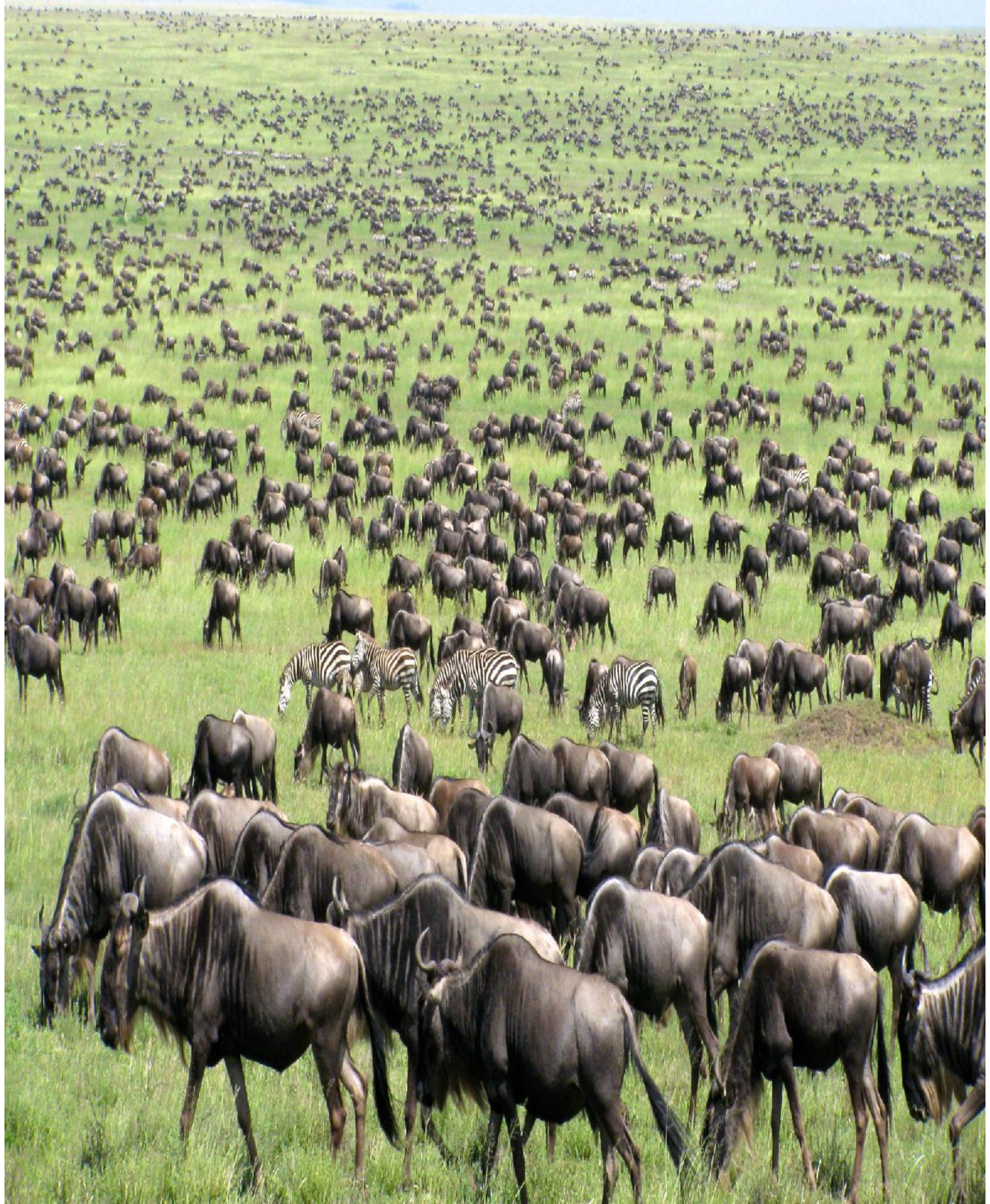
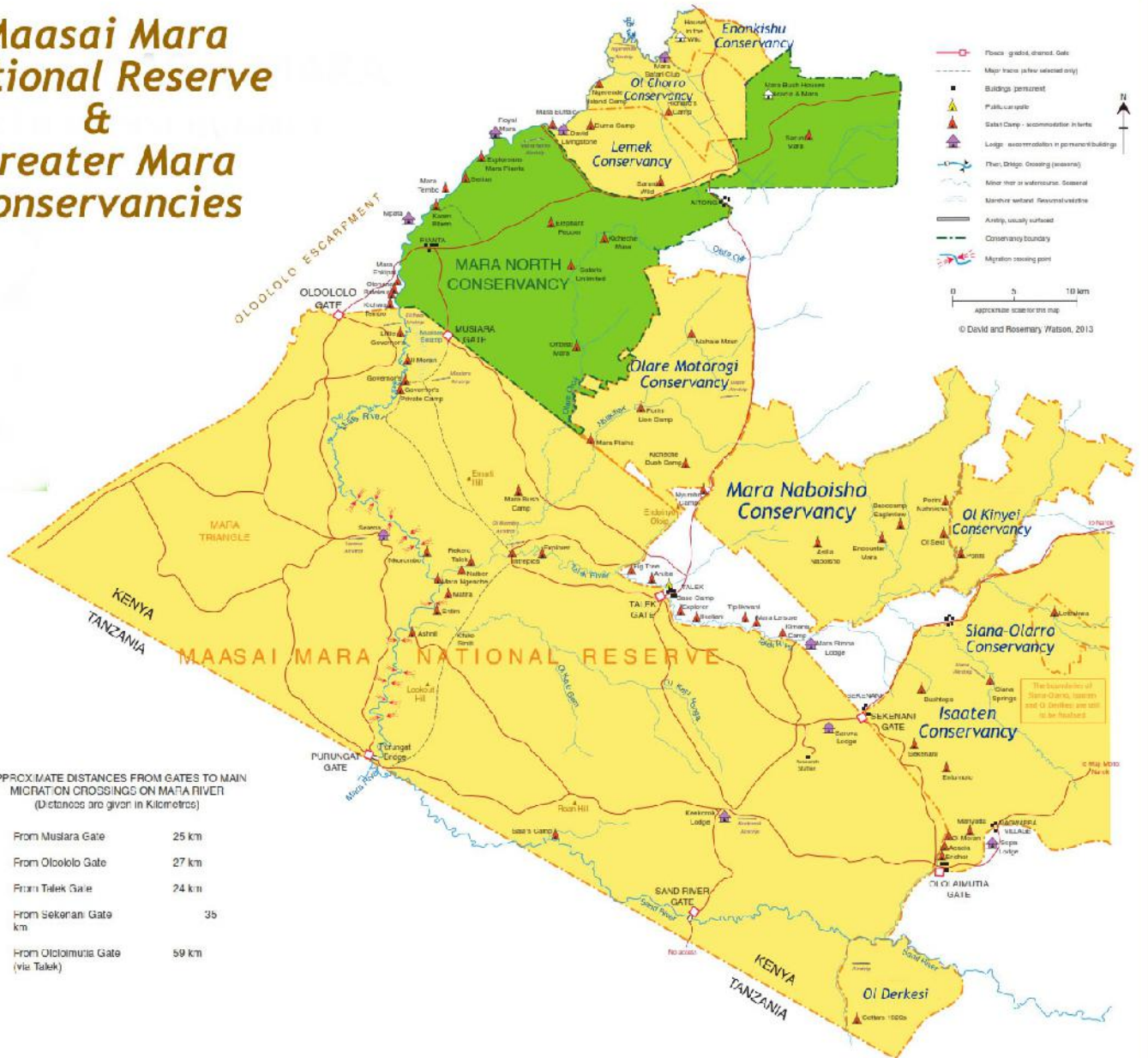


Masai Mara, Kenya Africa's Leading Park



Map of Masai Mara

Maasai Mara National Reserve & Greater Mara Conservancies



APPROXIMATE DISTANCES FROM GATES TO MAIN MIGRATION CROSSINGS ON MARA RIVER (Distances are given in Kilometres)

| | |
|---------------------------------|-------|
| From Musiara Gate | 25 km |
| From Oloololo Gate | 27 km |
| From Talek Gate | 24 km |
| From Sekeran Gate | 35 km |
| From Ololmutia Gate (via Talek) | 59 km |

Nature's Wild



■ Big Cats

■ Exotic Sunsets

■ Variety & Choices

■ Wild Vistas

■ Expert Guides

■ Affordable Stays

■ Responsible Travel

■ Fun and Value



A must visit



Featured Masai Mara Holiday Stays

**Exclusive Mara - 2, 3 and 4 Nights
in the heart of tropical savannah**

Overview & Highlights

A Masai Mara Safari holiday is **recommended** to all all Kenya visitors. Voted 6 times winner of **World Travel Awards as the best park in Africa**, experience breathtaking vistas, abundant wildlife spotting, natural settings, excellent African hospitality, conservation stories ,and the Maasai culture.

The wide and open spaces of the Great Rift Valley where the Masai Mara National Reserve is situated guarantees the most breathtaking sights, sounds and smells. This is the kingdom where lion is king, home to the legendary Maasai People and the cradle of one of the world's greatest geological wonders.

The way enroute from Nairobi offers picturesque views of awesome escarpments, gorges, lakes and volcanic mountains. The unique flora cannot be ignored; the appearing savannah bushes and woodlands

with the trademark savannah grasslands and woodlands that are a true symbol of wild Africa).



Choose between a **2 nights**, 3 or **4 Nights** longer during the July to October migration season. Have adequate time to traverse the Mara and experience the best game reserve in Africa. Masai Mara was home to Jonathan Scott's **BBC Big Cat Diary** starting in 1996 and winding in 2008 and related filmings in recent



Suggested Itinerary

Day 1: Arrival - Meet and Greet

Your holiday travel consultant and the appointed safari guide will warmly welcome your travel party and assist in transfer and check-in to your city hotel for overnight rest before safari. A comfortable and suitable transfer vehicle will be used.



Day 2: Nairobi - Masai Mara

Depart from Nairobi hotel at 7.30am and head to Masai Mara via the Great Rift Valley floor. Witnessing amazing natural scenery as you drive by. Arrive Masai Mara in time for a ready lunch. Relax at leisure in readiness for a PM game drive before dinner and overnight.



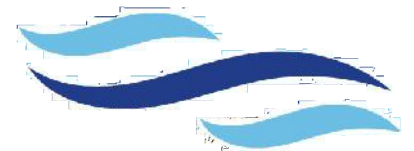
Day 3: Masai Mara - Game Drives

Unless a different choice is discussed, we venture into the park in search of the big 5 with picnic lunches. Spend the entire day exploring the wonders of this park - the animals, the birds, the scenery and the diverse flora unique to Africa. Return in the evening for dinner and overnight.



Day 4: Masai Mara - Nairobi

Enjoy an optional pre-breakfast game drive. Return to Nairobi after checking out, arriving early afternoon.



[Enquire now](#)

What Price Includes

- ✓ Accommodations in standard, deluxe or opulent
- ✓ Park fees for passengers and vehicles
- ✓ Preferred transport in Landcruiser or safari van including fuel and domestic flights as appointed in the itinerary
- ✓ Services of a professional guide knowledgeable in flora and fauna
- ✓ 1 litre of bottled drinking water per day
- ✓ Return Airport Transfers
- ✓ Emergency evacuation cover
- ✓ Complimentary treats

What is Excluded:

- ✗ Extra meals, drinks or snacks except what is served
- ✗ Tips and gratuities to guides and hotel staff
- ✗ Items of a personal nature
- ✗ International flights and visas
- ✗ Special activities e.g balloon safari, eco-tours and wellness treatments, lunch or dinner at carnivore.



The Greater Mara Conservancies

Exclusive Offers - Fly in

Safaris, Opulent Boutique Properties



Flight & transfers, accommodation and meals in exclusive opulent facilities, game drives, park fees. Price range (per person per night) - mid to peak season

3 Nights - Ol Seki Mara Camp

Ol Seki Hemingways is set on a rocky outcrop with great views of Naboisho Conservancy. Includes flights and transfers

Price Range: \$820-1070 ppn

3 Nights - at Naboisho Camp

Set on a lightly wooded hillside, 8 tents privacy and high quality service and fulfilling game drives

Price Range: \$970-1270 ppn



3 Nights - Encounter Mara Camp

Set in Acacia woodlands in a beautiful valley. Simple efficient and a great choice
12 tents on large acreage

Price Range: \$570-1020





3 Nights - Kicheche Mara North

Good quality mid-range option with 8 tents on great location and high privacy. Recommended

Price Range: \$770-970 ppn

3 Nights - Offbeat Mara Camp

Intimate little place with 7 tents set on a seasonal stream in a remote location. Perfect and owner-hosted

Price Range: \$670-970 ppn



3 Nights - Serian Mara North

Beautifully set above the Mara River. Only 7 tents for a high quality and opulent option

Price Range: \$1170-1270 ppn





3 Nights - Topi Mara Bush House

Set on a Dome-topped hill with broad views of Olare Motorogi Conservancy, Topi is a house with 3 guest rooms. Accommodates 9 in a family or private group

Price Range: \$820-1070 ppn

3 Nights - Mahali Mzuri Mara

Set on a quiet valley, this place is chic and innovative with guests in 14 rooms. Minimum age is 8.

Price Range: \$1070-1620 ppn



3 Nights - Mara Plains Camp

Beautifully set in a ribbon of riverine forest, Mara Plains is a gorgeous and polished little camp in 7 rooms. Minimum age is 8

Price Range: \$1170-1970 ppn

