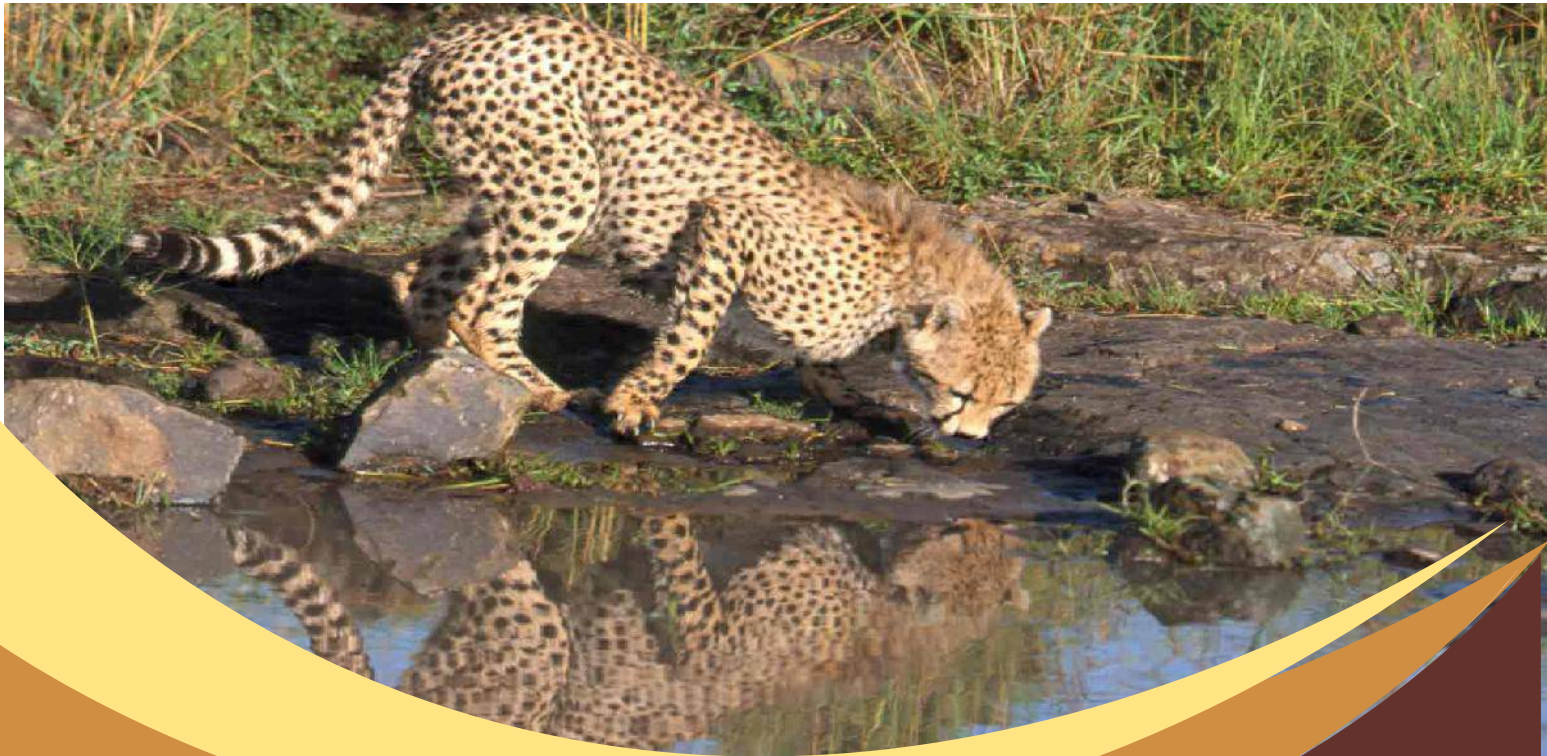


# Nairobi National Park



## Overview & Highlights

Nairobi National Park, the Nairobi Safari Walk and Animal Orphanage according to recent statistics are the most visited attraction in Kenya. The park is 117sq km.

A short drive out of Nairobi's central business district is the Nairobi National Park. Just 7-10 minutes drive from the heart of the capital. Wide open grass plains and backdrop of the city scrapers, scattered acacia bush play host to a wide variety of wildlife including the endangered black rhino, lions, leopards, cheetahs, hyenas, buffaloes, giraffes and diverse birdlife with over 400 species recorded. Visitors can enjoy the park's picnic sites, three campsites and the walking trails for hikers.

## The Nairobi National Park Experience

1. **Wildlife** : animals include buffalo, giraffe, lion, leopard, baboon, zebra, wildebeest and cheetah---100 mammal species. Over 400+ bird species.
2. **Picnic Facilities** : for corporate events, bush dinners, weddings, picnics, team building sessions, video and film production
3. **Over 500 different plant species** and 60 species of reptiles and amphibians
4. The **first park to be gazetted in Kenya** on December 16, 1946
5. Major **rhino sanctuary** for breeding and restocking other parks
6. **Large predators** :- lion, leopard, hyena and cheetah can be spotted in the park.
7. **Ivory Burning Site Monument** that signifies the country's commitment against poaching
8. **Walking trails** at hippo pools
9. Nairobi **Safari Walk** & the **Animal Orphanage**.
10. Quality accommodation **within the park**

# City of Nairobi



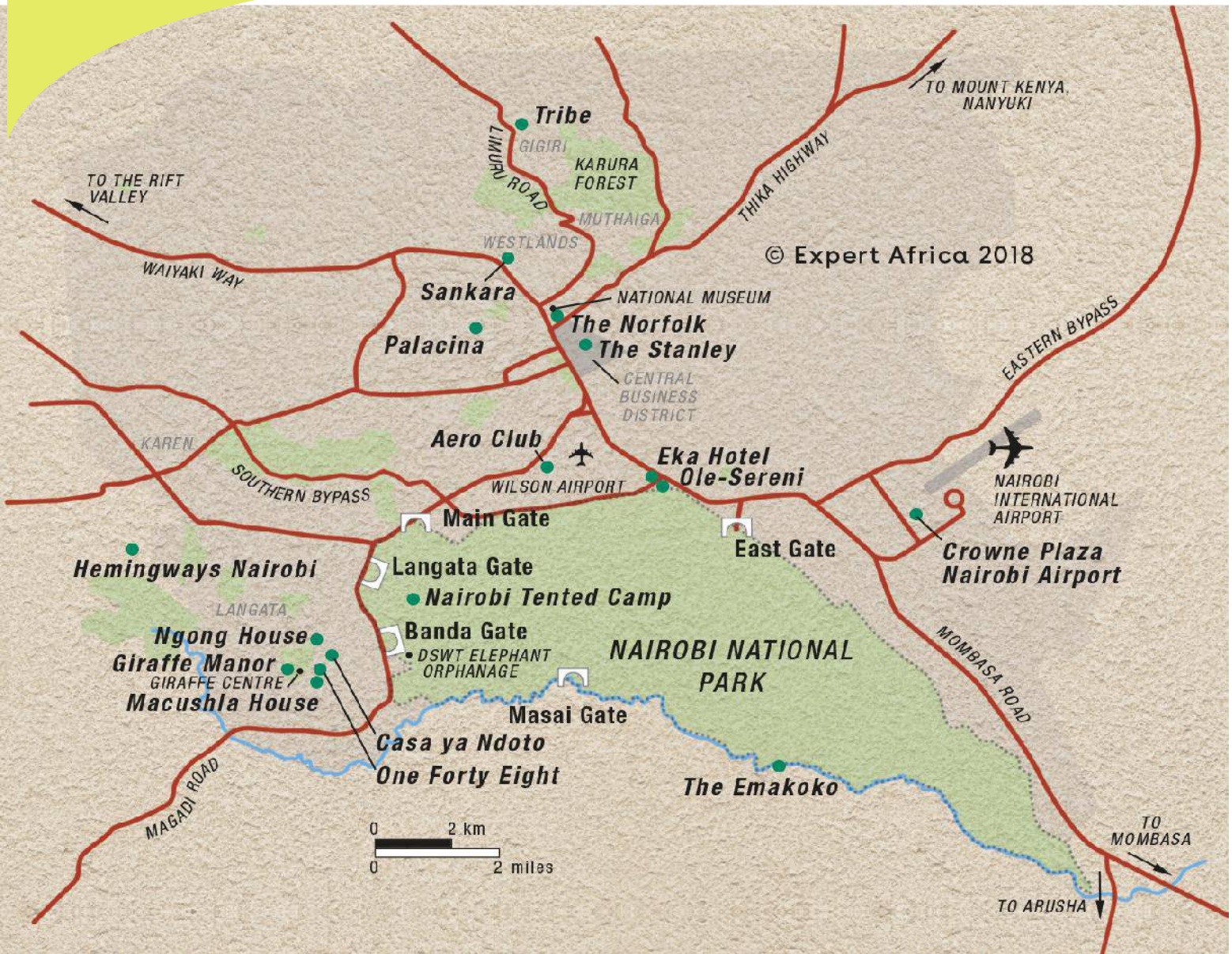
**Nairobi** is the only city in the world that has a national park within city precincts. This naturally propels Kenya as **“The Home of African Safari”**

The city lies on the Nairobi River and has an elevation of 1661m (5450 ft) above sea-level. Nairobi is the **most populous city in East Africa, with over 4.5m+** people and is one of the greatest cities of Africa, politically and financially. It is home or headquarters to **various UN organizational bodies and is a key hub for business and technology**

Nairobi has two airports, **Jomo Kenyatta International Airport (NBO)** and **Wilson Airport (WIL)** and one **Metro Train Station**. The ongoing **Rapid Bus Transit** is set to uplift the city’s commuting experience to a new level

**Major city attractions are:-** Nairobi National Park, Animal Orphanage and Safari Walk, A visit is the AFEW Giraffe Center, David & Daphne Sheldrick Wildlife Trust - Elephant Orphanage, Karen Blixen

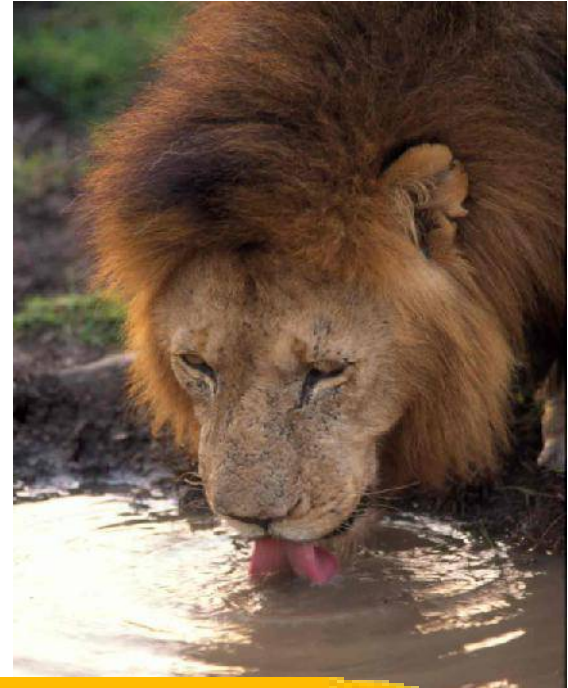
# Map of Nairobi National Park



# Suggested Trips & Excursions in Nairobi

## Nairobi National Park: 4 hrs

The tour can be undertaken from 11am to 1pm for the first two hours and then a break for a picnic lunch at one of the scenic picnic sites. The afternoon game drive starts at 2pm to 4pm. Alternatively, take all 4 hrs from 9am to 1pm and proceeding out for lunch.



## Sheldrick, Giraffe Center, Nairobi Park: 6 hrs

Trip starts at 11am to 12pm at David Sheldrick Wildlife Trust Orphanage and proceeds to nearby Giraffe Center from 12:15pm to 1.15pm. Lunch is served at your choice hotel or restaurant and the Nairobi National Park excursion begins at 4pm to 6pm. Proceed to booked hotel for dinner and overnight.



## David Sheldrick and Giraffe Center : 3 hrs

Trip starts at 11am to 12pm at **David Sheldrick** Wildlife Trust Orphanage and proceeds to nearby **Giraffe Center** from 12:15pm to 1.15pm.

Lunch is served at your choice hotel or restaurant.

A visit to **Kazuri Bead Factory** or **Utamaduni Crafts Center** to shop for souvenirs is a complimentary stop. Visitors are encouraged to



## Lunch or Dinner at Carnivore Restaurant

The point here is to **eat till you drop**. Game as well as domestic cuts are done expertly and served with excellent unique sauce. This is a **Must Do** especially at the end of a safari

