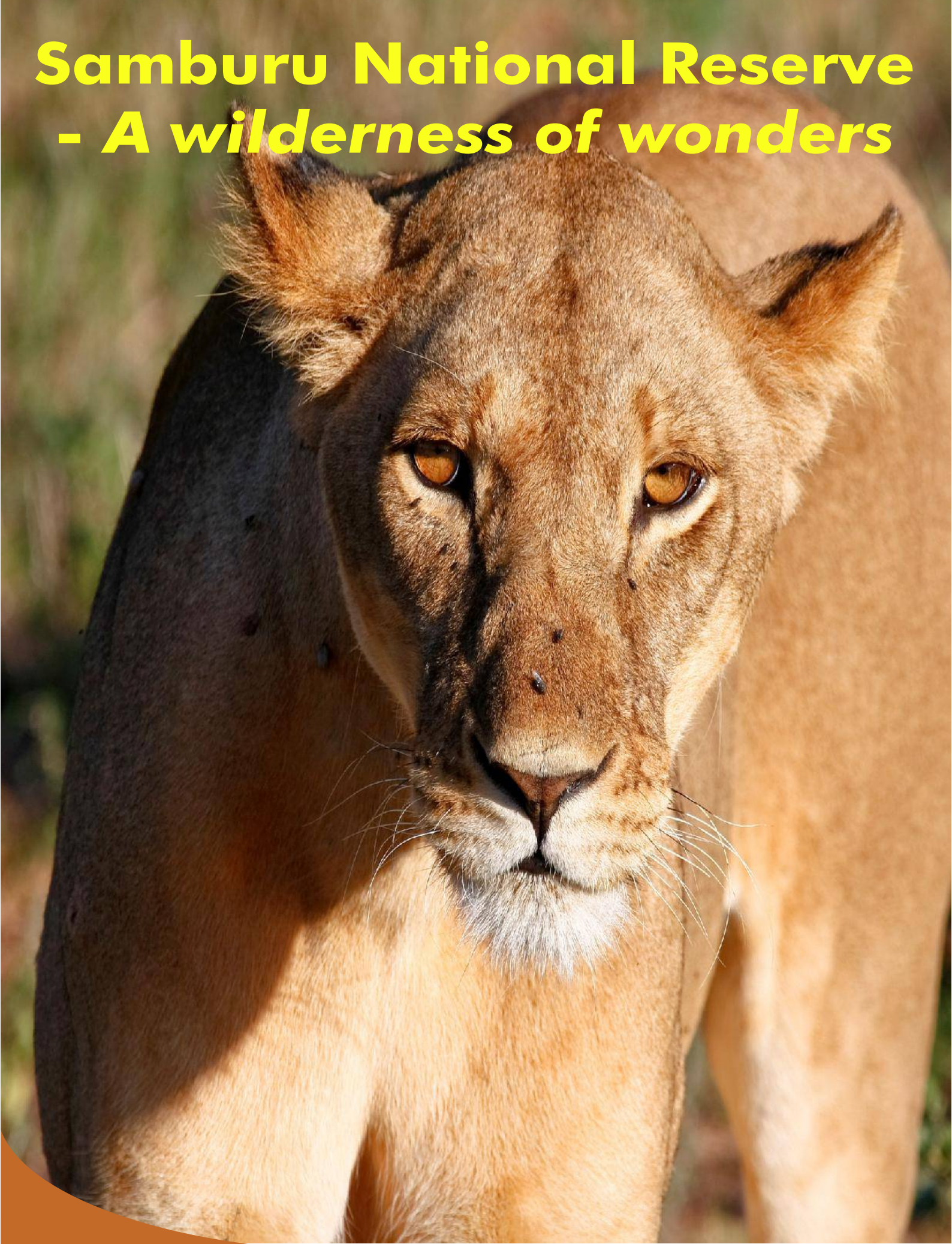


Samburu National Reserve **- *A wilderness of wonders***



A Must Visit on Safari

The changing vistas and landscapes on road safari from Nairobi are stunning. Samburu National Reserve is made up of scrubby, open bush land and savanna, with the fringing riverine forest of acacias and large doum palms extending along the edge of the River Ewaso Ngiro.

Whilst the bigger, and more expected animals (the likes of elephants, giraffe, the big cats etc.) can be seen daily inside the reserve, guests have the remarkable opportunity to see the Samburu Five - five rare and endemic animals to the Samburu ecosystem. They are the **reticulated giraffe, the Somali ostrich, the gerenuk, the Beisa oryx and the Grevy's zebra.**

the Samburu Tribe who, are a sub-tribe of the Maasai (fearless and adapted), are nomadic pastoralists, easily identified as they wear bright and colourful attire and the women adorn themselves in beaded necklaces and jewelry.

The park's landscape is very photogenic. The river Ewaso Ngiro is the heart of the park and contrasts against the dry and arid desert-like soil that shines bright red under the African sun.



Lioness on the banks of River Ewaso

The faces of Samburu



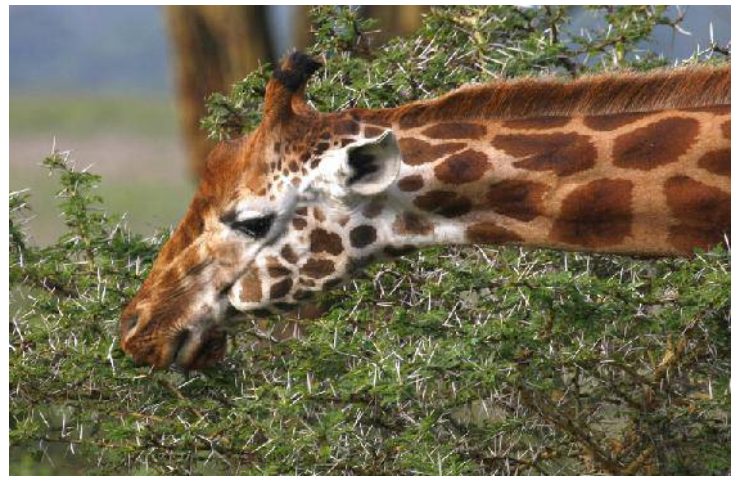
The Gerenuk



The Grevy's Zebra



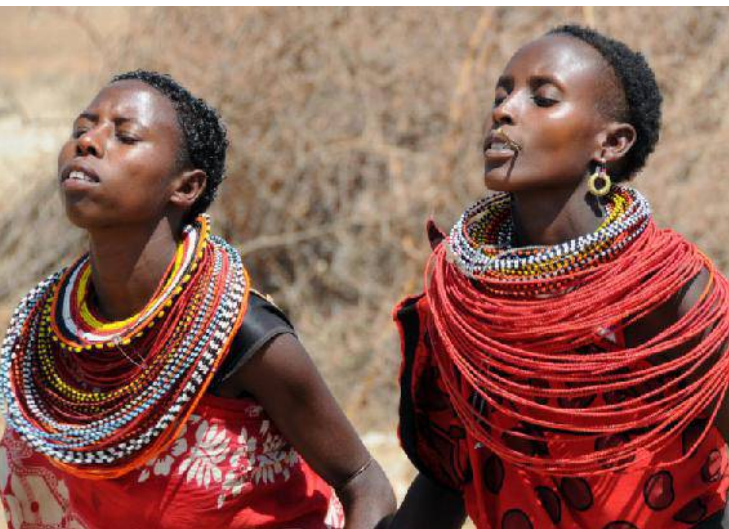
Beisa Oryx



Reticulated Giraffe



Elephant herds at River Ewaso



Suggested Trip to Samburu

The 6 Days Samburu, Naivasha / Elementaita/ Nakuru and Masai Mara Safari is one of the most popular safaris undertaken by holiday makers in Kenya. We normally suggest an additional day at Sweetwaters | Olpejeta Conservancy to spice up your safari journey and experience with us

Day 01 & 02: Nairobi - Samburu

Depart from Nairobi hotel after an early breakfast to Samburu. A stop at the Equator is a good recommended. The amazing natural scenery as we drive northwards include views of Mt. Kenya, the Aberdares Ranges and much more as we cross river after another. Lunch at lodge in Samburu and a late afternoon game drive before dinner and overnight. **Day 2** here is a full exploration of the park combination of Samburu and Buffalo Springs. With packed lunches, return at dusk for dinner and overnight.

Day 03: Samburu - Nakuru/Elementaita/Naivasha

Leave Samburu and head to Lake Nakuru National Park or Naivasha or Lake Elementaita. Choice activities after lunch in all 3 places. A brief stopover at Thompson's Falls is recommended.

Day 04-05: Masai Mara

Depending on your safari choice and our recommendations, we leave Nakuru, Elementaita or Naivasha to Masai Mara National Reserve. Lunch will be served at lodge/camp. Afternoon game drive and return lodge for dinner and overnight. **Day two** here is supposed to be fun-filled. With packed lunches, we venture out to explore this amazing park with excellent game spotting all throughout the year. We return in the evening for dinner and overnight at lodge

Day 06 - Nairobi

Return to Nairobi after checking out, arriving early afternoon. A drop off at the airport or a Nairobi hotel for overnight stay. A lunch at Carnivore is